

1 2 3 4 5 6 7 8

REV	LOCATIONS	DESCRIPTION	DATE	REVISER	APPD

A

B

C

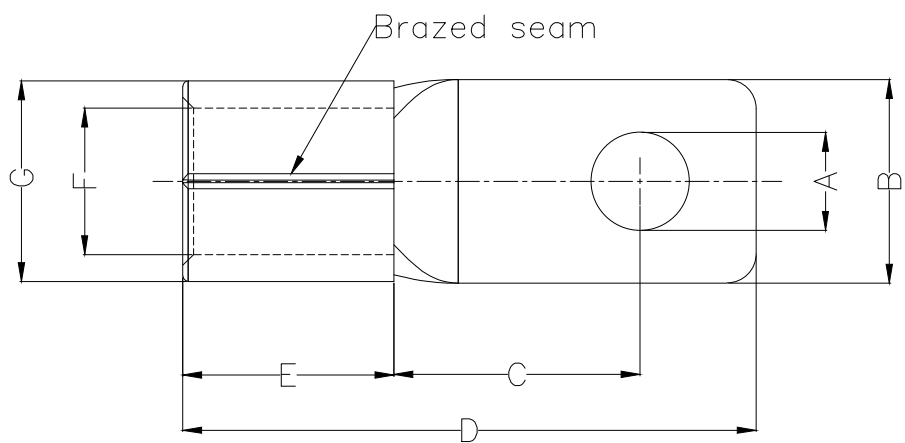
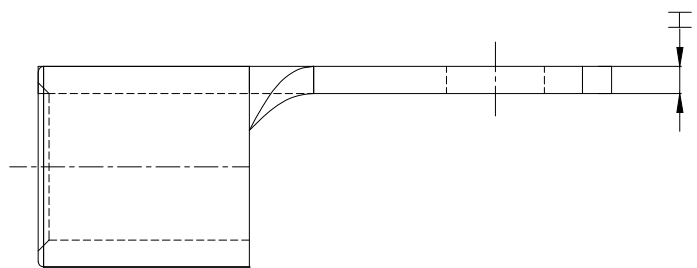
D

E

F

Notes:

Material: Copper  
 Plating: Matte tin plated  
 Wire range: 25mm<sup>2</sup>/ (4AWG)  
 Applicable screw: 1/4" UNC  
 Max current: 115A



PART NO.	Dimensions							
	A	B	C	D	E	F	G	H
FGT01-022000600B0N2	±0.3	±0.5	±1	±1	±1	±0.5	±0.5	±0.05
	6.5	12.5	13.5	32	12.4	7.8	11.5	1.7

<p>THIRD ANGLE PROJECTION</p>	GENERAL TOLERANCES (UNLESS SPECIFIED)		APPROVE BY	DATE	PART NO.	ITEM NO.	<p>Building Technology Cornerstone</p>		
	X. ±0.30	X.* ±5'	LEO	19/JAN/21				FGT01-022000600B0N2	FGT01
	DESIGN UNITS mm		CHECKED BY	DATE	TITLE			REV 0	SHEET NO. 1/1
	X.X ±0.20	X.X' ±2'	GISELLE	19/JAN/21	Rectangular tongue terminal				
SCALE 5:1	SIZE A4	X.XX ±0.15	X.XX' ±1'	DRAWN BY	DATE	THIS DRAWING CONTAINS INFORMATION THAT IS PROPRIETARY TO TXGA INDUSTRIAL ELECTRONICS(S.Z)CO.,LTD AND SHOULD NOT BE USED WITHOUT WRITTEN PERMISSION			
		X.XXX ±0.10	X.XXX' ±0.5'	PYD	19/JAN/21				

1 2 3 4 5 6 7 8